

PRODUCT SPECIFICATION FOR INFORMATION

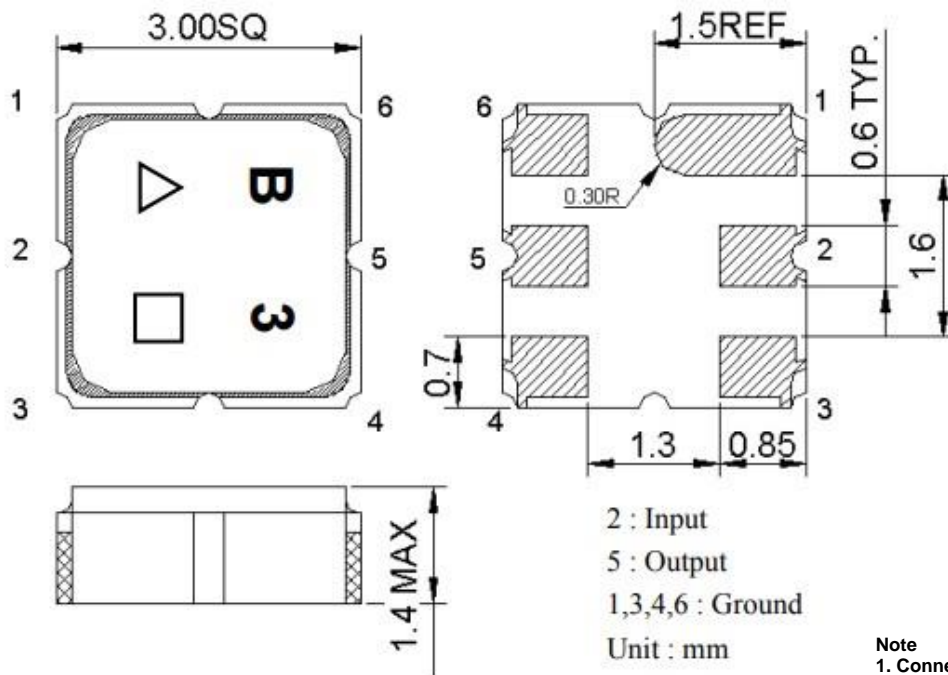
FINAL SPECIFICATION

Product Name: SAW Filter
Part No: MSA-C2595_50MD-A-R0

■ History List

No.	Rev. No.	Description	Date	Author	Final Approver
1	R0	Draft	2021.12.21	Bryan Jeon	Michael Jeon

■ Mechanical Drawing



Note
 1. Connector: SMD
 2. Finish: Silver plated

△ : Year Code (2009->9, 2010->0, ..., 2018->8)

□ : Date Code (W01->A, W02->B, ... W27->a, ..., W52->z)

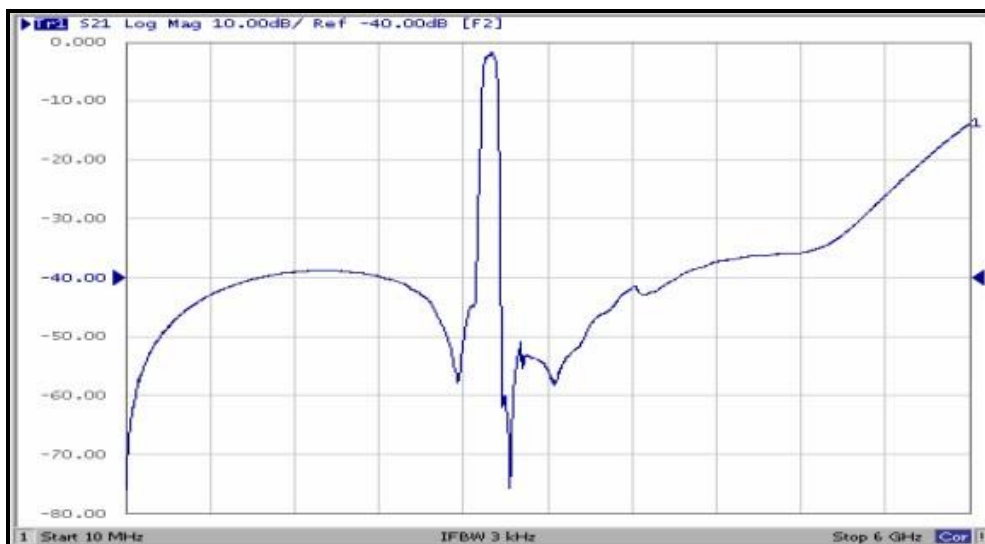
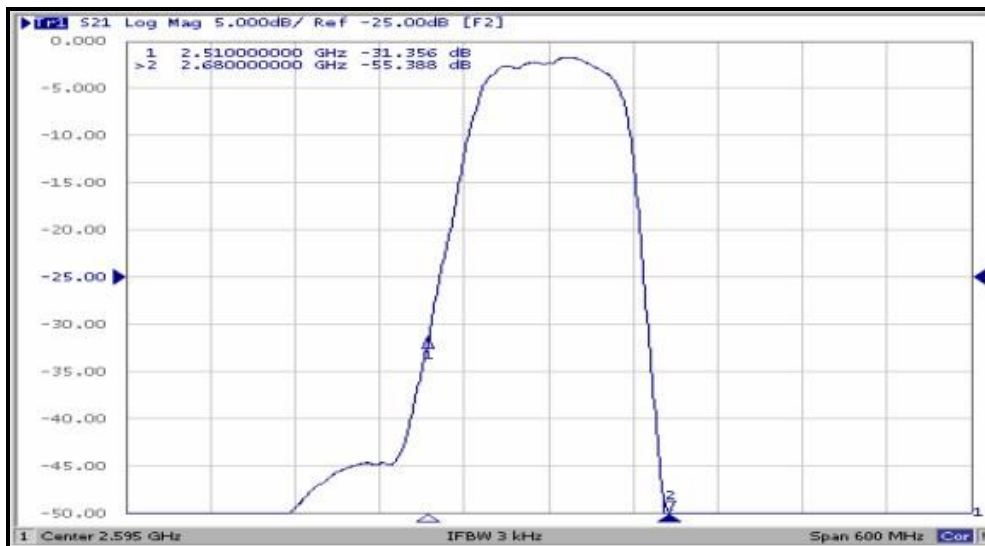
■ Electrical Specification

Parameter	Specification	Remark
1. Center Frequency	2595MHz	
2. Bandwidth [BW]	$F_c \pm 25\text{MHz}$ [2570~2620MHz]	
3. Insertion Loss in BW	3.8dB Max.	
4. Amplitude Ripple in BW	1.8dB Max.	
5. VSWR in BW	2:1 Max.	
6. In/Out Impedance	50Ω	
7. Attenuation [Absolute Value]	40dB Min. @ DC~200MHz	
	35dB Min. @ 200~2485MHz	
	20dB Min. @ 2485~2510MHz	
	20dB Min. @ 2680~2705MHz	
	35dB Min. @ 2705~3000MHz	
	20dB Min. @ 3000~4900MHz	
	10dB Min. @ 4900~6000MHz	
8. Temperature Coefficient of Frequency	-36ppm/°C	
9. Input Power Level	10dBm	
10. DC Voltage	3V	
11. Operating Temperature	-30°C to +85°C	
12. Storage Temperature	-40°C to +95°C	

Remarks: This is a preliminary datasheet for reference.

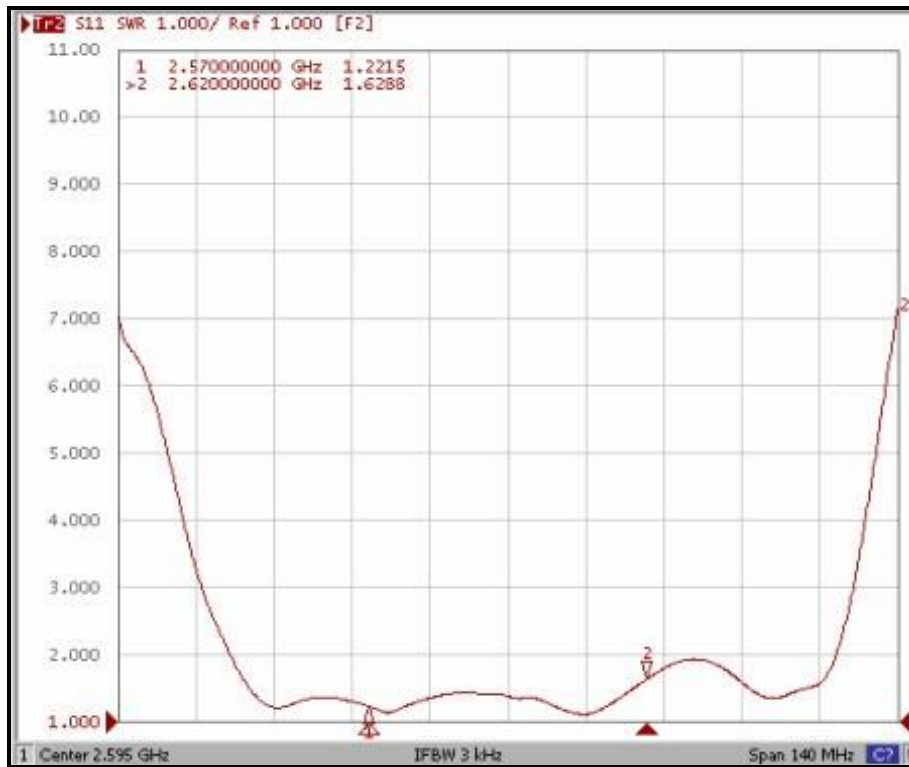
■ Simulation Data

1) Transfer Functions

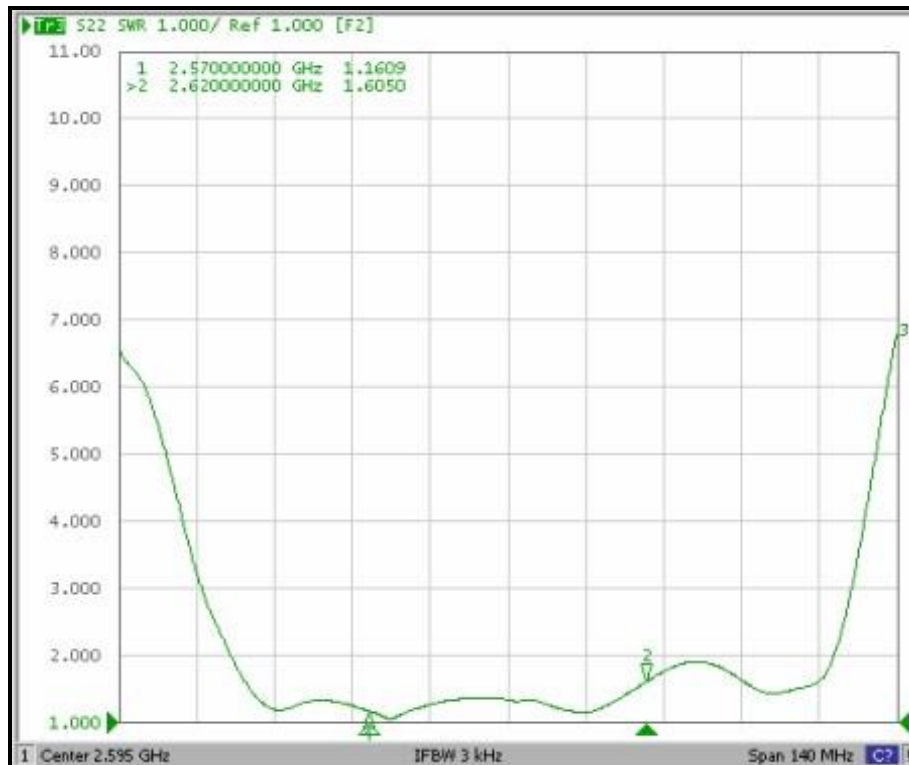


2) Reflections Functions

S11



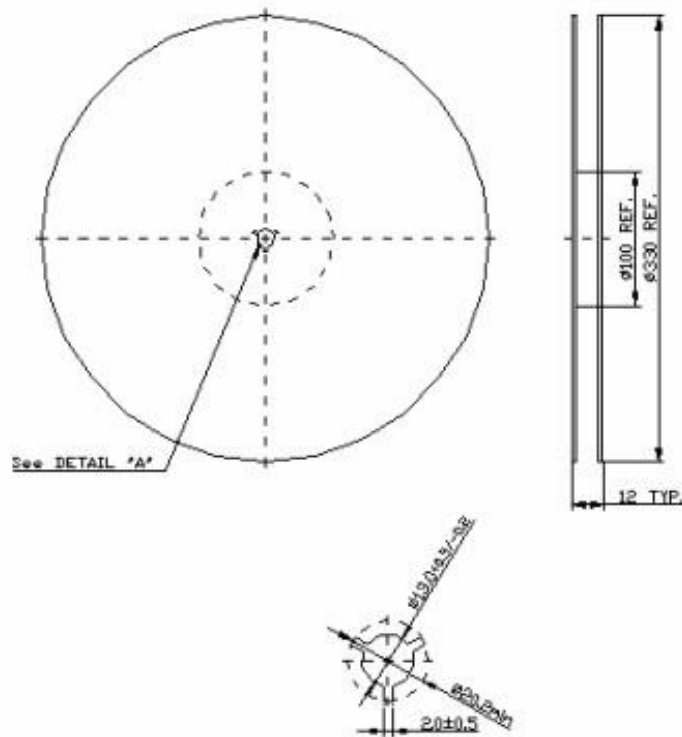
S22



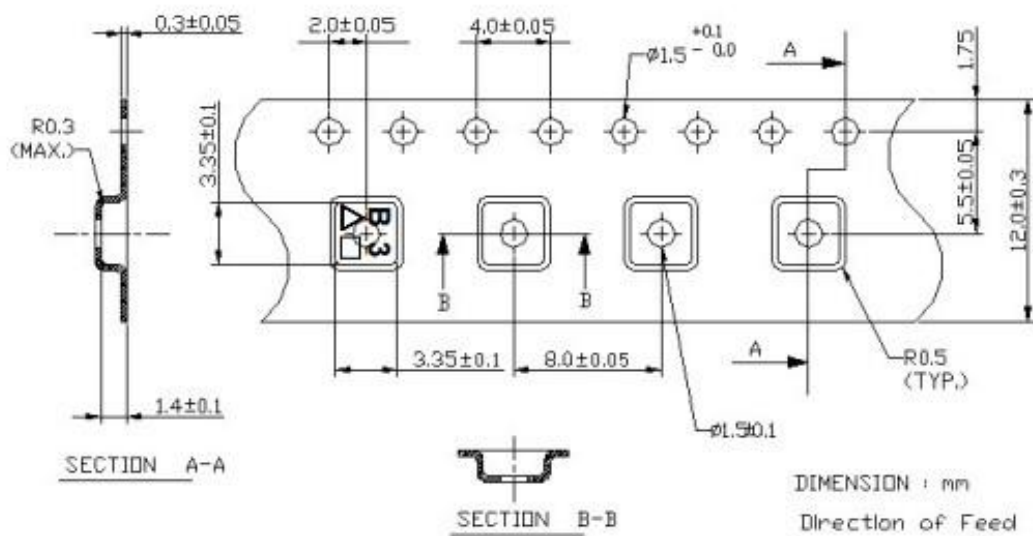
■ Packing

1. REEL DIMENSION

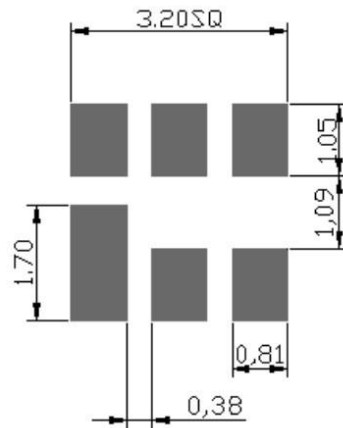
(Reel Count : 7"=1000 ; 13"=3000)



2. TAPE DIMENSION



■ Recommended PCB Board Pattern



■ Recommended Reflow Profile

1. Preheating shall be fixed at 150~180°C for 60~90 seconds.
2. Ascending time to preheating temperature 150°C shall be 30 seconds min.
3. Heating shall be fixed at 220°C for 50~80 seconds and at 245~260°C peak (min. 10sec).
4. Time: 2 times.

