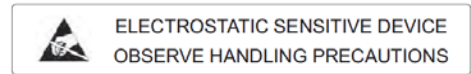


**Features:**

- Pass Band : 0.1~8GHz
- Insertion Loss : 1.5dB
- Package Size : 4.0x4.0x0.9mm

**Absolute Maximum Ratings**

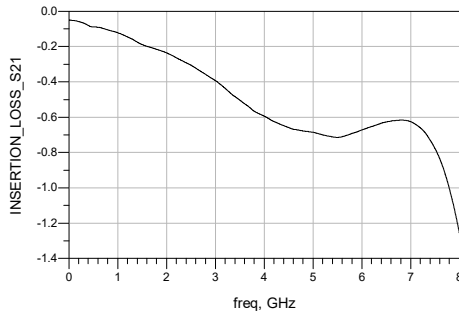
- Max. Input Power : +50dBm
- Storage Temperature : -65 ~ +150Deg.C
- Operating Temperature : -55 ~ +125Deg.C



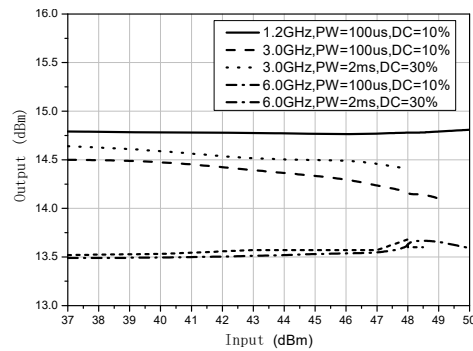
**Electrical Specifications (TA=+25Deg.C, 50Ω system)**

Parameter	Min.Value	Typical Value	Max.Value	Unit
Frequency Range	0.1-8			GHz
Insertion Loss	-	1.26	1.5	dB
Flat Leakage	-	14.0	-	dBm
Input Return Loss	10.0	11.0	-	dB
Output Return Loss	10.0	11.0	-	dB
Recovery Time	-	-	50	nS

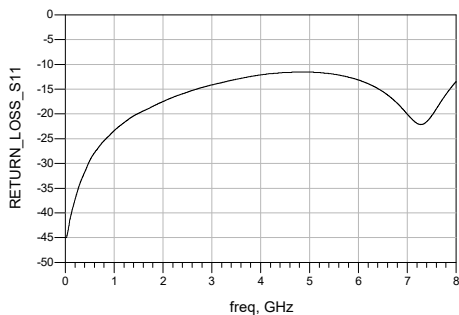
Insertion Loss vs, Frequency



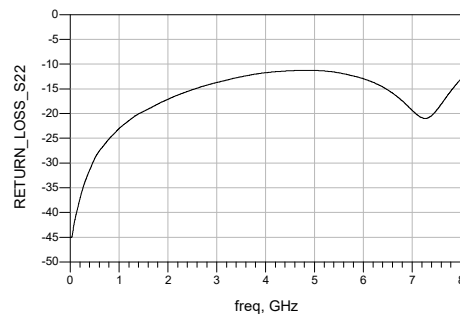
Flat leakage



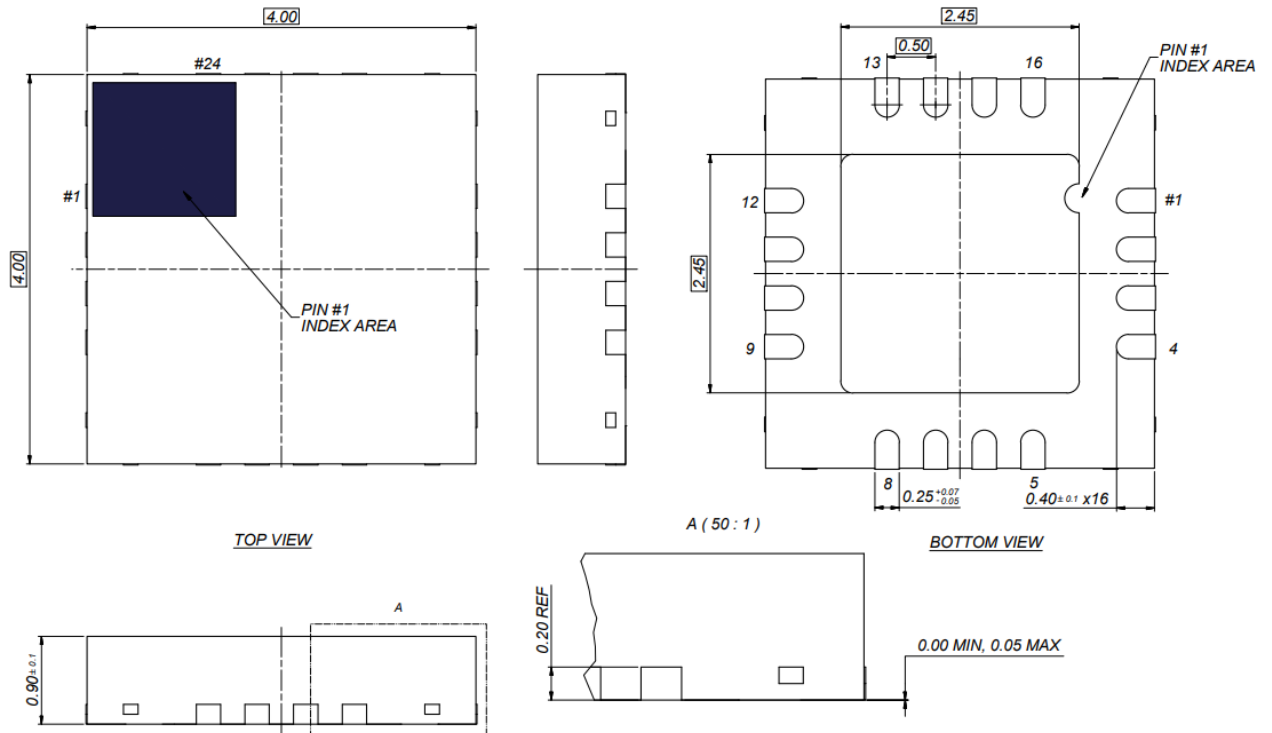
Input Return Loss vs. Frequency



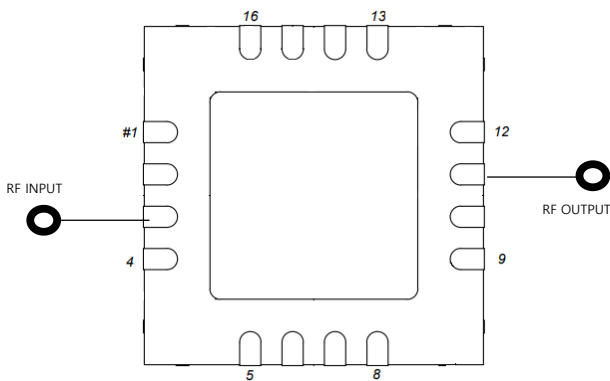
Output Return Loss vs. Frequency



**Size**



**Function Block Diagram**



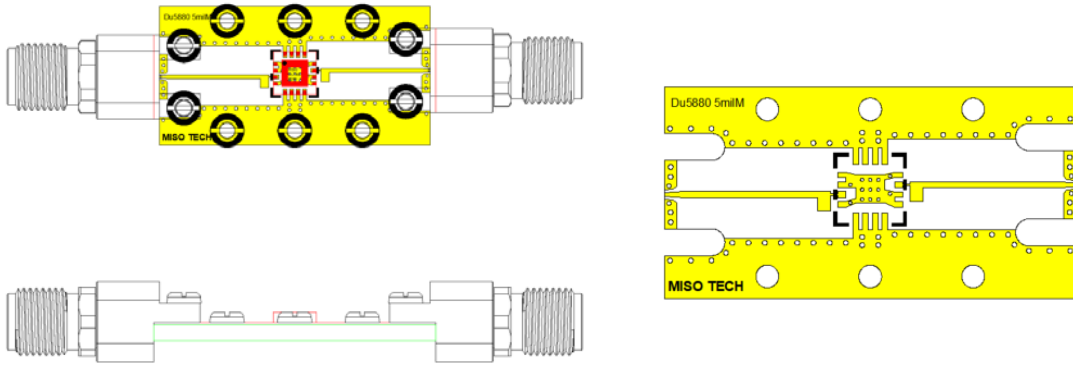
Pad NO.	Symbol	Function
3	RF INPOT	Input port, 50ohm
11	RF OUTPORT	Output port, 50ohm
1,2,4~10 12~16	NC	GND

**Applications**

- Receive Chain Protection
- Commercial and Military Radar

**Evaluation Board and Mounting Details**

- RT/Duroid 5880 5mil
- 



**Evaluation Board PCB Infotmation**

