

PRODUCT SPECIFICATION FOR INFORMATION

PRELIMINARY SPECIFICATION

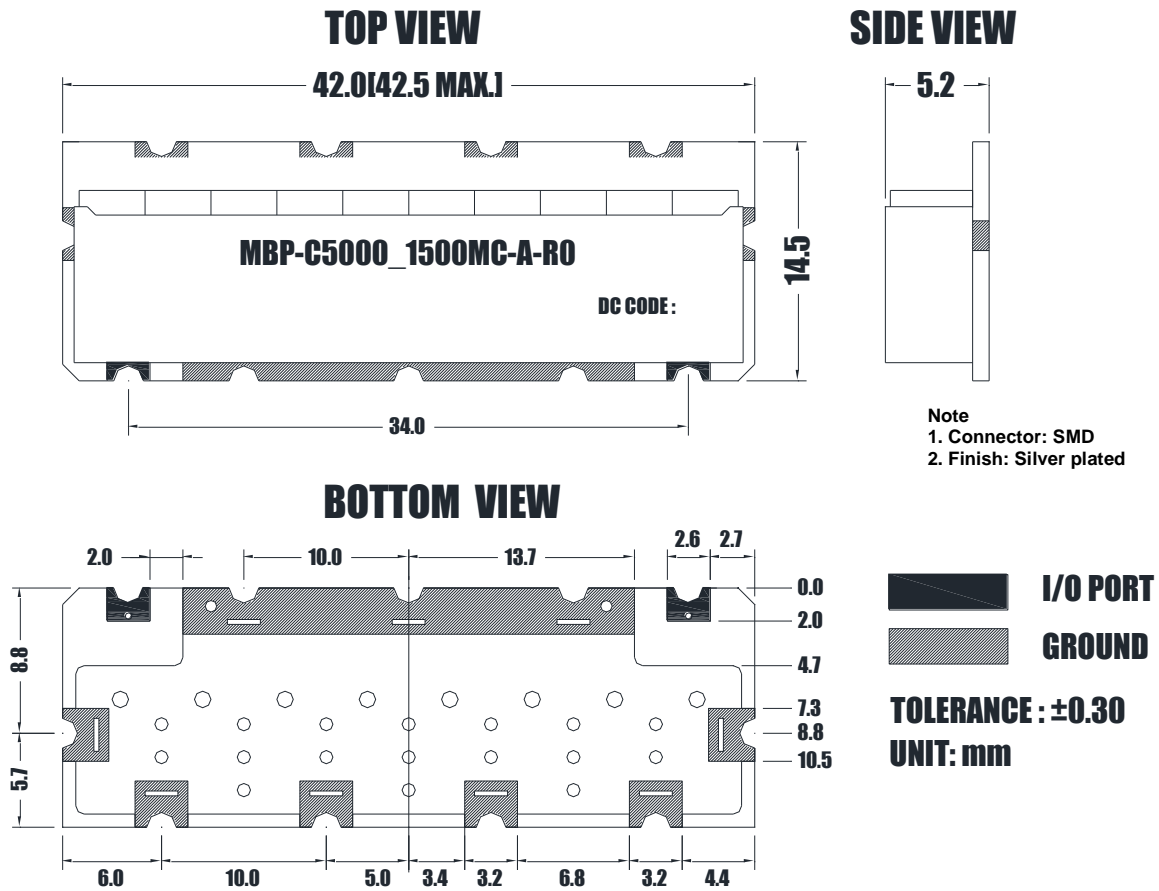
Product Name: Ceramic Band Pass Filter

Part No: MBP-C5000_1500MC-A-R2

■ History List

| No. | Rev. No. | Description | Date | Author | Final Approver |
|-----|----------|-----------------------------|------------|------------|----------------|
| 1 | R0 | Draft | 2021.12.03 | Bryan Jeon | Michael Jeon |
| 2 | R1 | Add Simulation Data | 2021.12.13 | Bryan Jeon | Michael Jeon |
| 3 | R2 | Has changed Simulation Data | 2021.12.27 | Bryan Jeon | Michael Jeon |
| | | | | | |

■ Mechanical Drawing

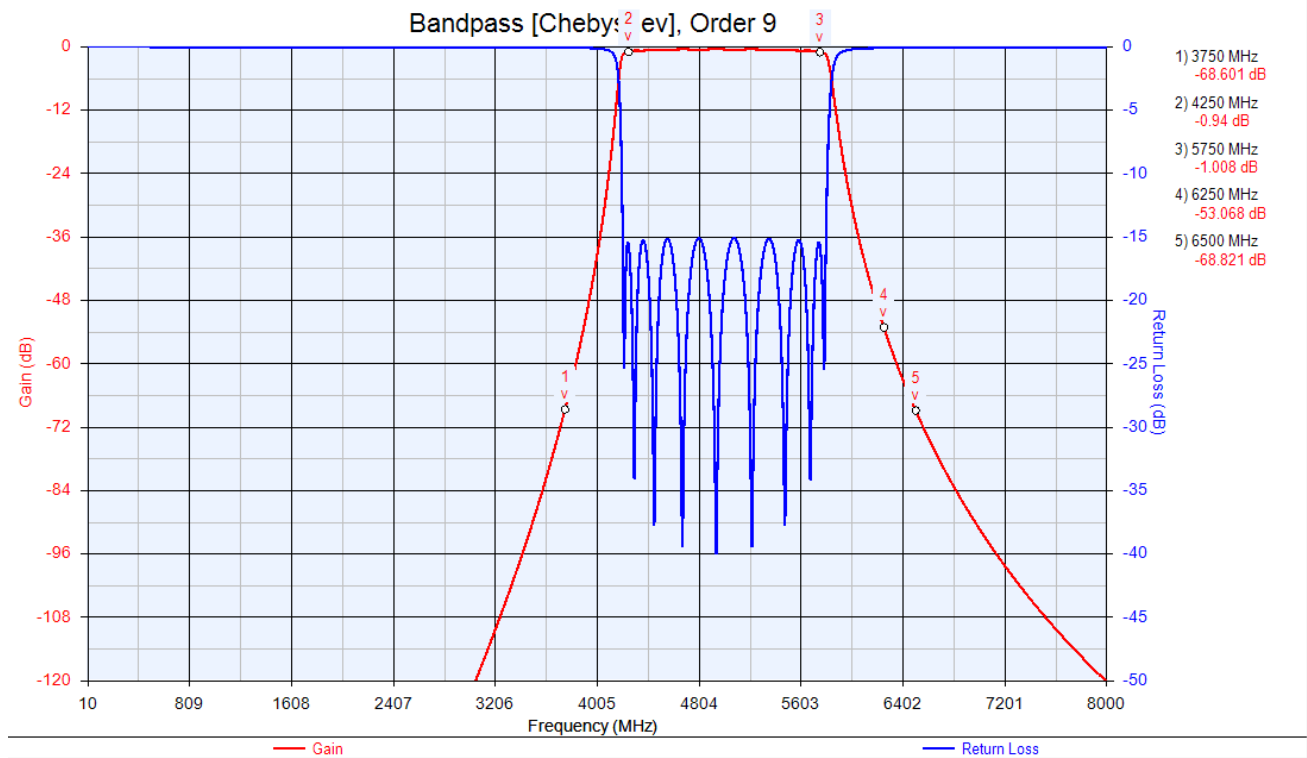


■ Electrical Specification

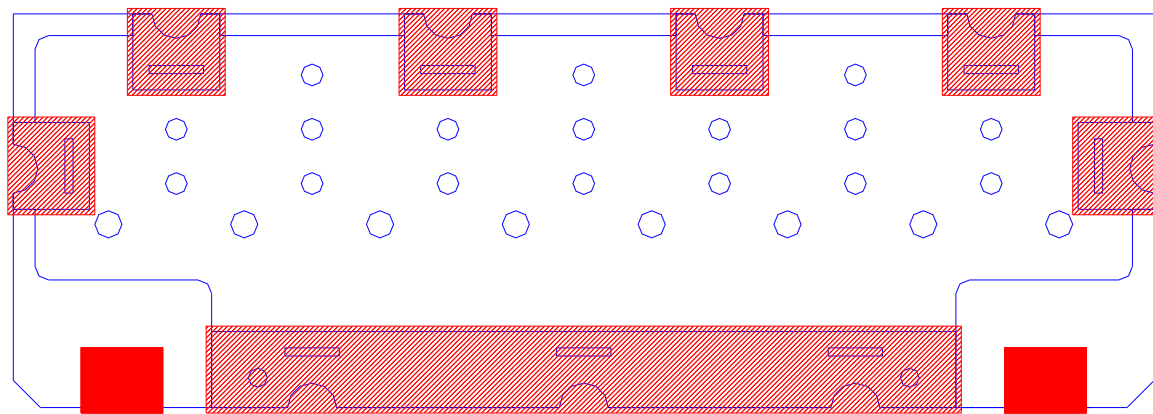
| Parameter | Specification | Remark |
|---------------------------------|--|--------|
| 1. Center Frequency | 5000MHz | |
| 2. Bandwidth [BW] | $F_c \pm 750\text{MHz}$ [4250~5750MHz] | |
| 3. Insertion Loss in BW | 2.0dB Max. | |
| 4. Ripple in BW | 0.8dB Max. | |
| 5. Return Loss in BW | 15dB Min. | |
| 6. In/Out Impedance | 50Ω | |
| 7. Attenuation [Absolute Value] | 60dB Min. @ 3750MHz | |
| | 35dB Min. @ 6250~6500MHz | |
| 8. Power Handling | 1W Max. | |
| 9. Operation Temperature Range | -40°C to +85°C | |

Remarks: This is a preliminary datasheet for reference.

Simulation Data



Recommended PC Board Pattern



GROUND SOLDERING POINT
 I/O PORT SOLDERING POINT

Remarks: Recommend using silver-containing solder paste