

PRODUCT SPECIFICATION FOR INFORMATION

PRELIMINARY SPECIFICATION

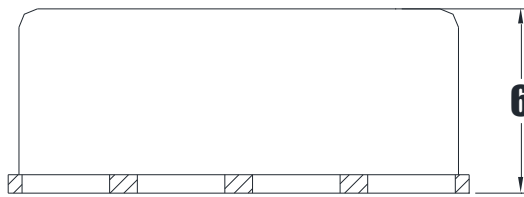
Product Name: LC Band Pass Filter

Part No: MBP-C2000_500ML-A-R0

■ History List

No.	Rev. No.	Description	Date	Author	Final Approver
1	R0	Draft	2021.12.03	Bryan Jeon	Michael Jeon

■ Mechanical Drawing



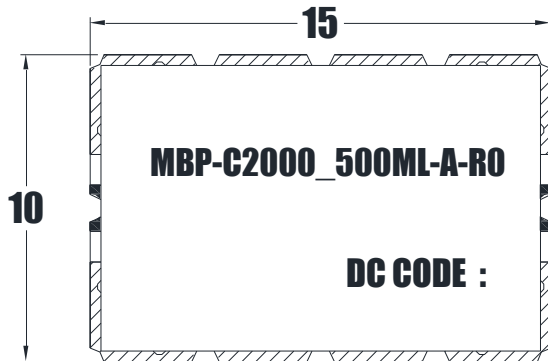
 I/O PORT

 GROUND

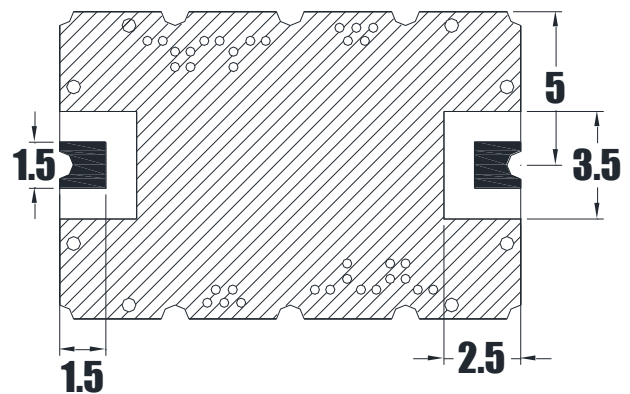
TOLERANCE: ± 0.30

UNIT: mm

TOP VIEW



BOTTOM VIEW



Note

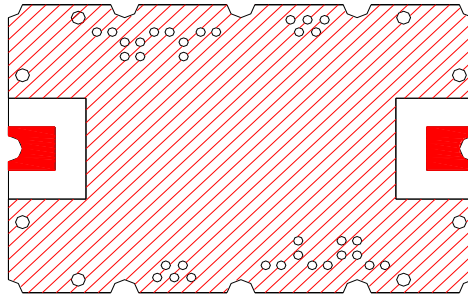
1. Connector: SMD
2. Finish: Silver plated

■ Electrical Specification

Parameter	Specification	Remark
1. Center Frequency	2000MHz	
2. Bandwidth [BW]	$F_c \pm 250\text{MHz}$ [1750~2250MHz]	
3. Insertion Loss in BW	1.8dB Max.	
4. Ripple in BW	0.5dB Max.	
5. VSWR in BW	1.5:1 Max.	
6. In/Out Impedance	50Ω	
7. Attenuation [Absolute Value]	45dB Min. @ 750~1250MHz	
	60dB Min. @ 3000MHz	
	60dB Min. @ 3750~4250MHz	
8. Power Handling	1W Max.	
9. Operation Temperature Range	-40°C to +85°C	

Remarks: This is a preliminary datasheet for reference.

■ Recommended PC Board Pattern



I/O PORT



GROUND

Remarks: Recommend using the soldering paste of 183°C melting point.