

PRODUCT SPECIFICATION FOR INFORMATION

PRELIMINARY SPECIFICATION

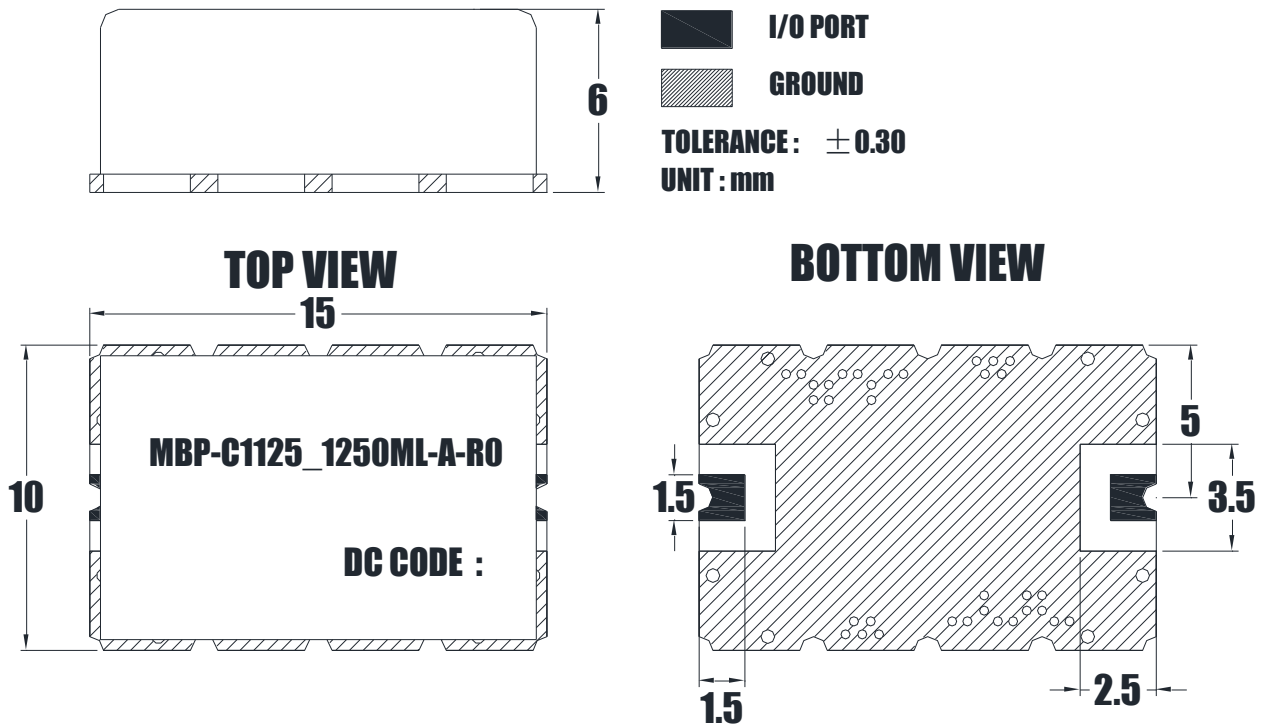
Product Name: LC Band Pass Filter

Part No: MBP-C1125_1250ML-A-R0

■ History List

| No. | Rev. No. | Description | Date | Author | Final Approver |
|-----|----------|-------------|------------|------------|----------------|
| 1 | R0 | Draft | 2021.12.03 | Bryan Jeon | Michael Jeon |
| | | | | | |
| | | | | | |
| | | | | | |

■ Mechanical Drawing



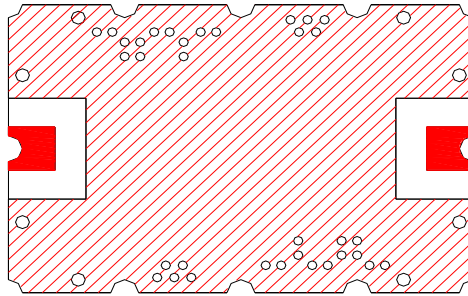
Note
 1. Connector: SMD
 2. Finish: Silver plated

■ Electrical Specification

| Parameter | Specification | Remark |
|---------------------------------|---------------------------------------|--------|
| 1. Center Frequency | 1125MHz | |
| 2. Bandwidth [BW] | $F_c \pm 625\text{MHz}$ [500~1750MHz] | |
| 3. Insertion Loss in BW | 1.5dB Max. | |
| 4. Ripple in BW | 0.5dB Max. | |
| 5. VSWR in BW | 1.5:1 Max. | |
| 6. In/Out Impedance | 50Ω | |
| 7. Attenuation [Absolute Value] | 45dB Min. @ 250MHz | |
| | 30dB Min. @ 2000~3500MHz | |
| | 10dB Min. @ 3500~4000MHz | |
| 8. Power Handling | 1W Max. | |
| 9. Operation Temperature Range | -40°C to +85°C | |

Remarks: This is a preliminary datasheet for reference.

■ Recommended PC Board Pattern



I/O PORT



GROUND

Remarks: Recommend using the soldering paste of 183°C melting point.