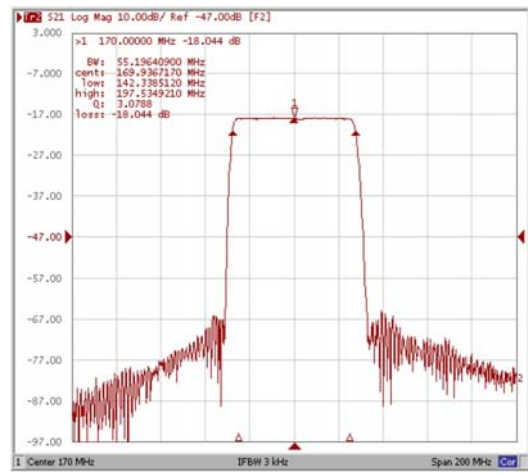
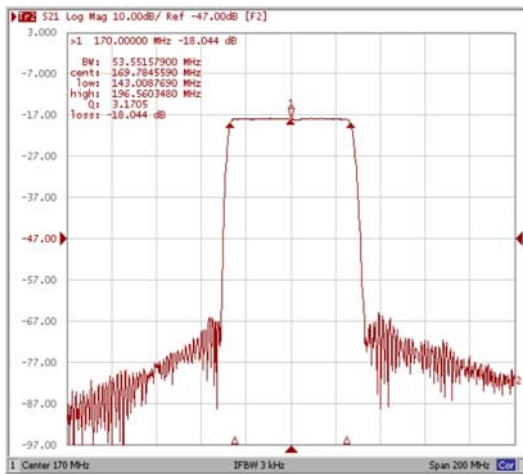


## PRODUCT SPECIFICATION FOR INFORMATION

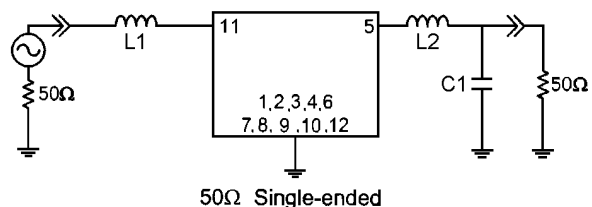
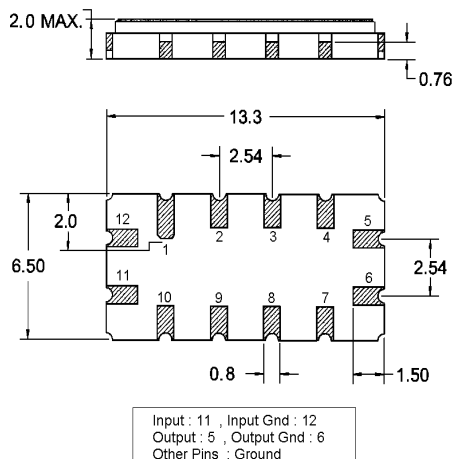
- Customer : STEE
- Product Name : IF SAW FILTER
- Part No : M17053V

### 1. Typical Performance

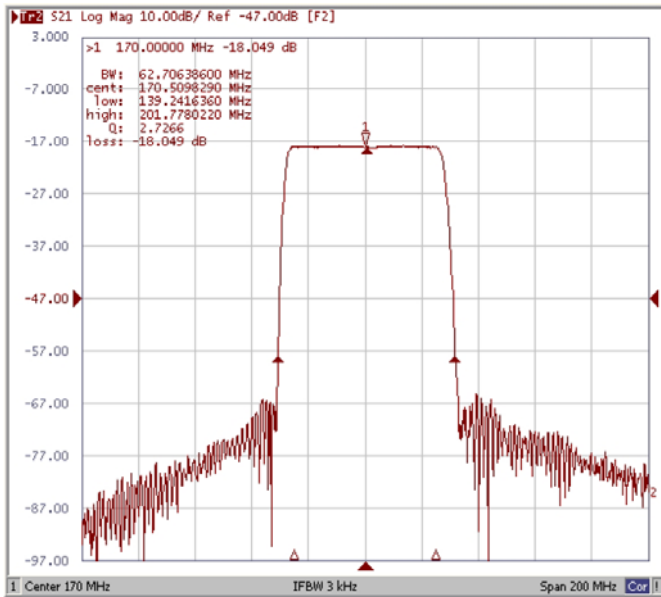


### 2. Specification

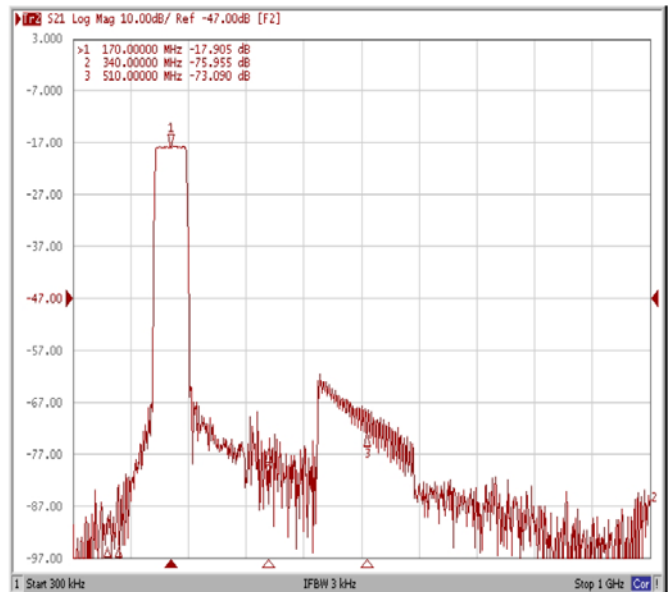
Parameter	Unit	Min.	Typ.	Max.
Center Frequency	MHz		170.00	
Insertion Loss	dB		18.00	21.00
1dB Bandwidth	MHz	53.00	53.50	
3dB Bandwidth	MHz			
40dB Bandwidth	MHz		62.70	63.30
Amplitude Ripple within( $F_o \pm 25\text{MHz}$ )	dB		0.40	1.0
Group Delay Variation( $F_o \pm 25\text{MHz}$ )	nsec		10	40
Absolute Delay @ $F_o$	$\mu\text{sec}$		0.61	0.70
Ultimate Attenuation	dB	40	45	
Temperature Coefficient	ppm/ $^{\circ}\text{C}$		-86	
Operating Temperature	$^{\circ}\text{C}$		-40 $^{\circ}\text{C}$ ~ +85 $^{\circ}\text{C}$	



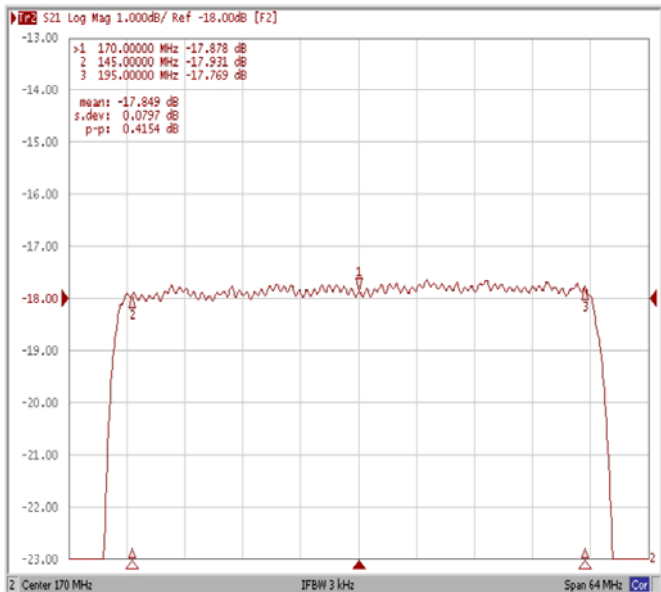
L1=82nH, L2=150nH, C1=82pF  
Source / Load Impedance = 50Ω  
Ambient Temperature = 25 $^{\circ}\text{C}$



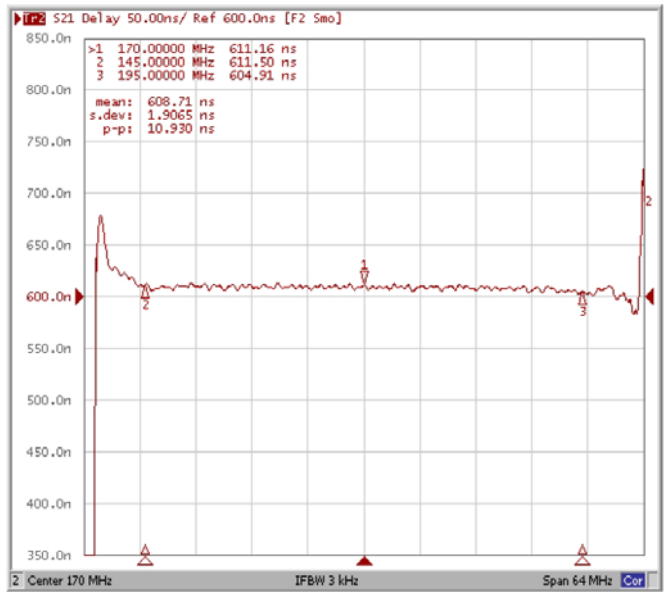
-40dB Bandwidth



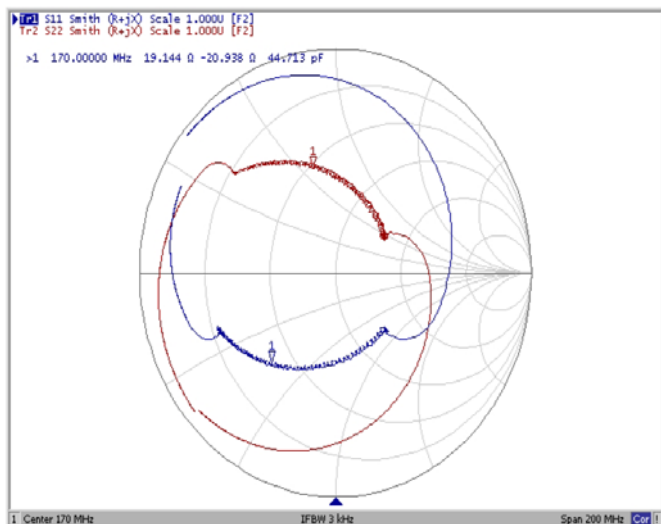
Harmonics



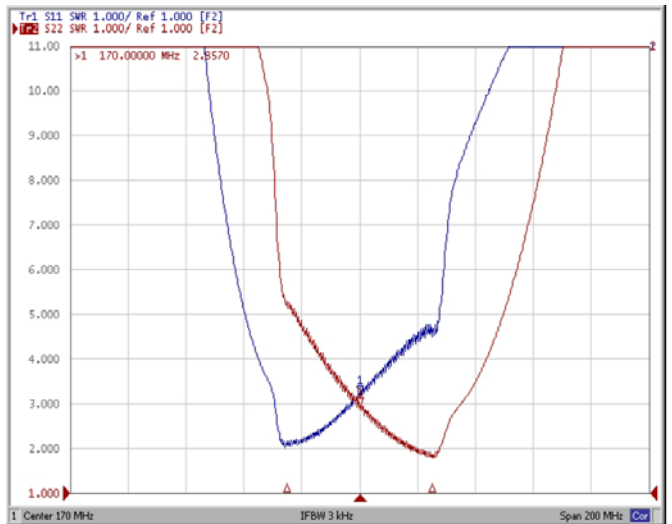
Ripple Variation  $F_0 \pm 25\text{MHz}$



Group Delay Variation  $F_0 \pm 25\text{MHz}$



Smith Chart



SWR