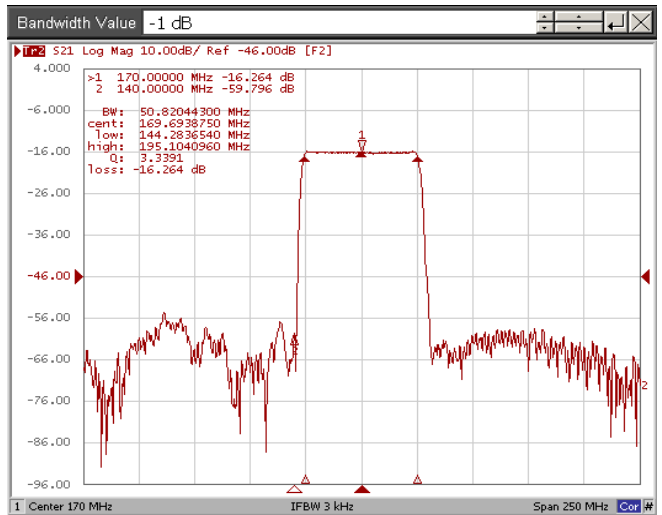
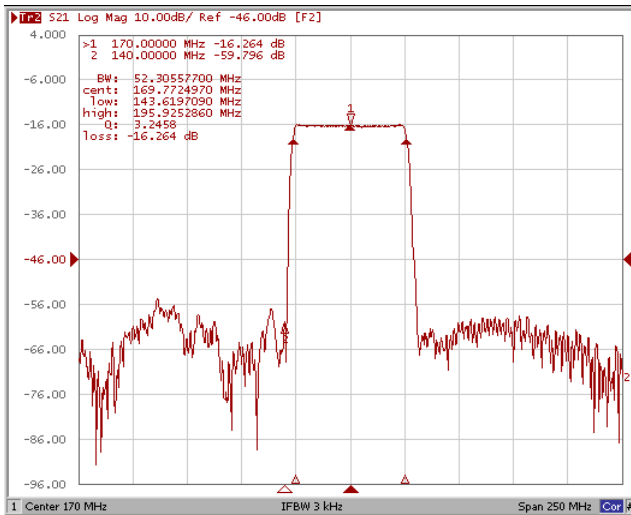


PRODUCT SPECIFICATION FOR INFORMATION

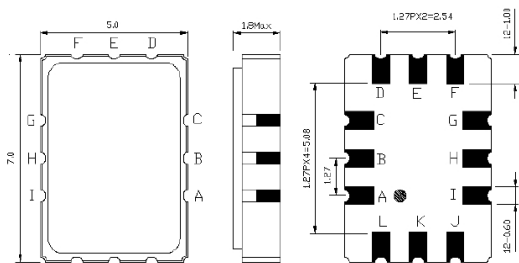
- Customer : STEE
- Product Name : IF SAW FILTER
- Part No : M17050S

1. Typical Performance



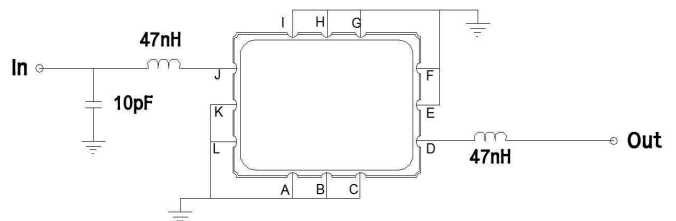
2. Specification

Parameter	Unit	Min.	Typ.	Max.
Center Frequency	MHz	-	169.80	-
Insertion Loss @ Fo	dB	-	16.2	-
1dB Bandwidth	MHz	50.00	50.8	-
40dB Bandwidth	MHz	-	59.6	60.0
Amplitude Ripple Variation(203.7~204.3MHz)	dB	-	1.0	-
Group Delay Variation(203.7~204.3MHz)	nsec	-	24	60
Absolute Delay @ Fo	µsec	-	0.61	0.70
Relative Attenuation @ 140MHz	dB	40	43	-
Ultimate Attenuation	dB	35	38	-
Temperature Coefficient	ppm/°C	-86		
Maximum input power rate	dBm	+30dBm		
Operating Temperature	°C	-40°C ~ +100°C		



J : Input, D : Output

A,B,C,E,F,G,H,I,K,L : Ground



L1=47nH, L2=47nH, C1=10pF
 Source / Load Impedance = 50Ω
 Ambient Temperature = 25°C

